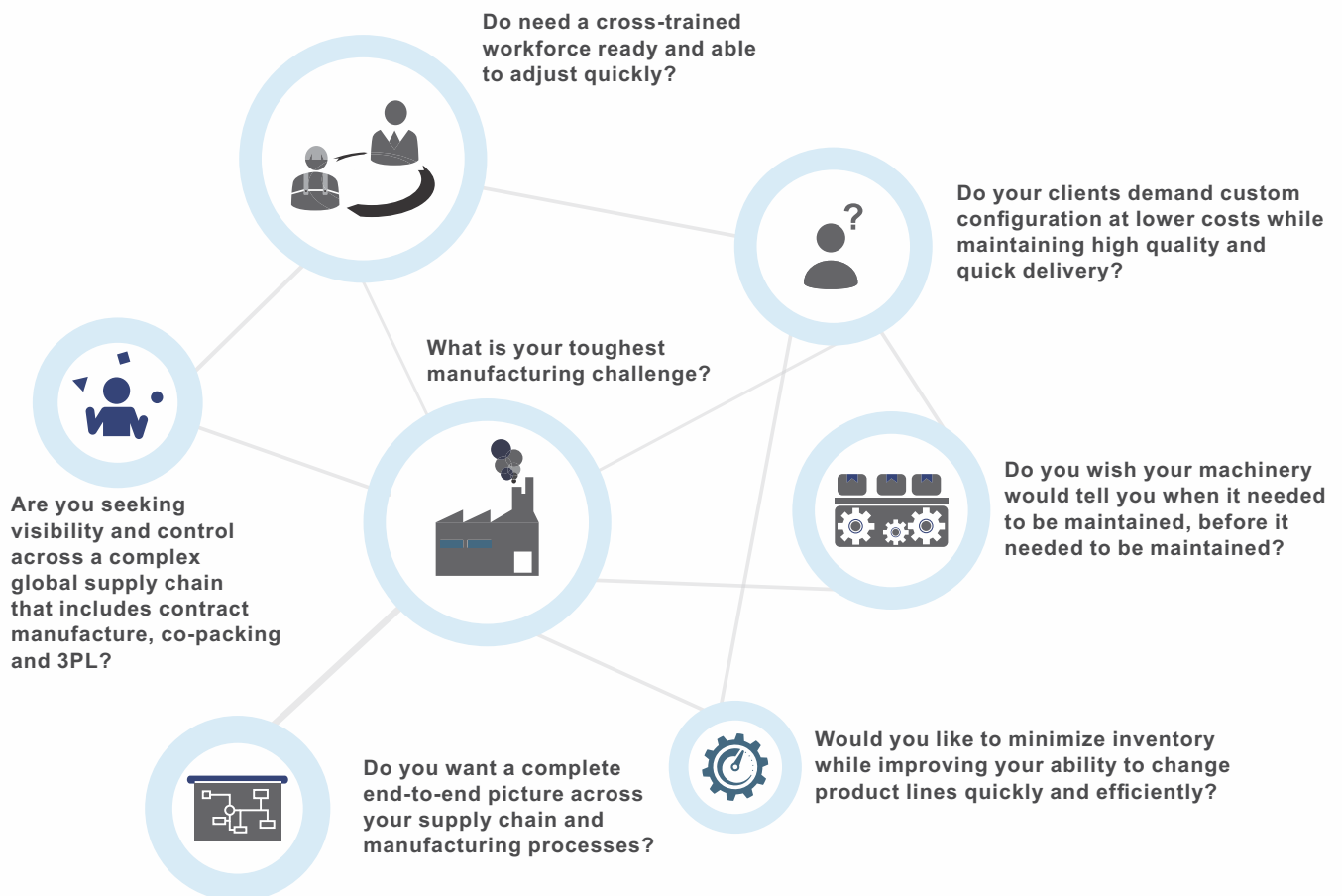


# Improve the Efficiency and Profitability of Your Manufacturing Operation



**If you have any or all of these challenges, then Bramasol has the right solution for you:**

- Tailored solutions that support make-to-order and engineer-to-order business models
- Complex variant configuration solutions
- Manufacturing solutions that are integrated with your core finance, accounting and purchasing systems to ensure end-to-end visibility of costs, availability and profit
- Industry tailored talent management and skills matching solutions to ensure you have the right people doing the right things
- Improved supplier collaboration
- Order management solutions that improve speed, accuracy and visibility of customer orders and link them to suppliers or the manufacturing floor

We believe every business has the right to excel. Powered by the world's leading business software platform, SAP, our superior consulting and support team will partner with you to solve your toughest challenges.

Bramasol has the depth, strength and industry expertise to deliver high quality, cost-effective solutions. We help elevate customers to new levels of success and create lasting partnerships making the impossible, possible.

## Experience the benefits of Bramasol's Manufacturing Solutions:

- Lower inventory carrying costs
- Real time insights into manufacturing efficiency and through put
- Less down time on key equipment and better asset utilization
- Integration into vendor, supplier, and customer supply chains
- Robust solutions that have been implemented by hundreds of companies worldwide
- Lower turnover, higher productivity and a highly skilled talent pool
- Data integrity and real-time insights across your offshore and "in-shore" plants to optimize productivity and reduce costs
- Improved traceability and constant quality improvement

## Customer Success Story:

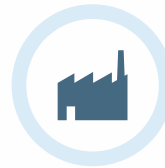
**Challenge:** A medium sized turbine manufacturer needed a visibility and control of its manufacturing and supply chain processes. Their CEO wanted real time visibility into orders and shipments across the globe.

**Solution:** They chose SAP and Bramasol to help them. Using SAP ERP an Business Objects, they are able to maintain visibility into a complex global supply chain. Their CEO opens his SAP BOBJ dashboards every morning to check status on outstanding orders, shipments and inventory across the globe.

## Manufacturing specific SAP Line of Business Solutions:



Quality Management and Compliance



Product Lifecycle Management



Supply Chain and Supply Network Collaboration



Advanced Planning and Optimization  
(Also on SAP HANA)



Manufacturing Integration and Intelligence



SAP Business Objects Dashboards for Manufacturing



SAP Talent Management

## CONTACT INFORMATION

**United States - Headquarters Santa Clara Office**  
3979 Freedom Circle  
Suite 620 Santa Clara, California 95054  
Phone +1 (408) 831-0046 | Fax (408) 831-0047

**India - Headquarters Pune Office**  
Kapil Complex, 1<sup>st</sup> Floor, Survey No.82/ 1, Baner Road, Pune 411 045  
Phone +91 20 4071-9000

[www.bramasol.com](http://www.bramasol.com)  
[info@bramasol.com](mailto:info@bramasol.com)